



818 S. FLORES ST. SAN ANTONIO, TEXAS 78204 www.saha.org

Procurement Department

## ADDENDUM # 6

To: File 1901-910-23-4878  
QQ for: Villa Tranchese Fire Protection Improvements

---

**Please note the following change:**

**The bid due date and time are changed to: April 23, 2019 at 2:00 p.m.**

**The following question was asked:**

**Question 1:** My electrician just called and he is unclear about information on ME-7B / KN 11 (#4/0 wire going into a 400A disconnect) and ME-2B /KN 11 (a 5000A fully rated switch gear coming out of Section B), plus KN 6 is a bussed duct also coming out of Section B. The gist of the question is: What is inside of the 5000A switchgear and how does it relate to the gutter feeding the fire pump? Several of these details don't seem to match up, and because we are discussing a 5000A switchgear, the inside details are very important and expensive.

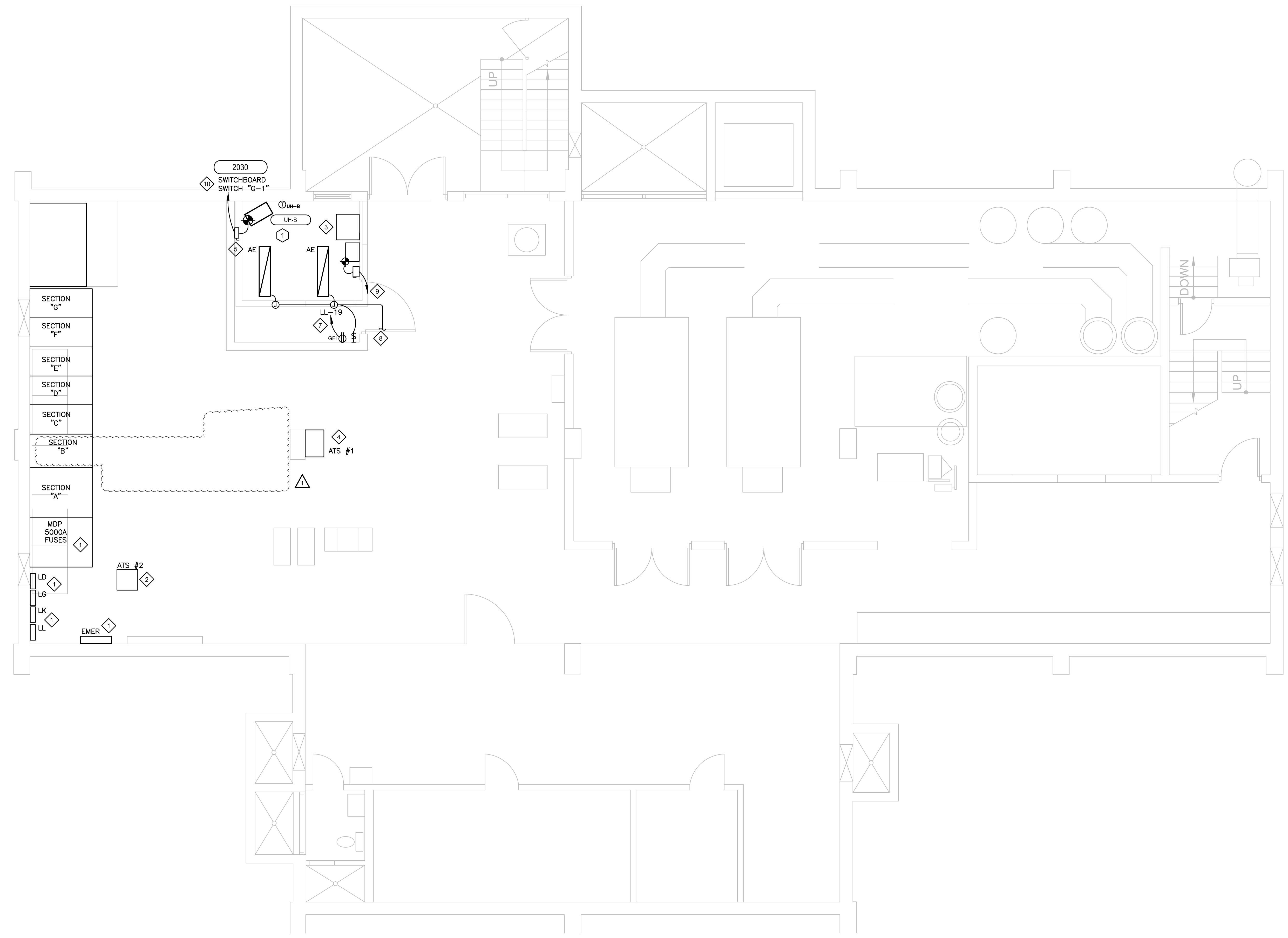
**Answer 1:** Refer to attached revised drawing ME-2B for clarification.

By: Charles R Bode  
Charles Bode Asst. Director of Procurement

Date: April 17, 2019

**MECHANICAL/ELECTRICAL BASEMENT PLAN**

**San Antonio Housing Authority  
 Villa Tranchese Apartments  
 307 Marshall Street  
 San Antonio, Texas**



**1 MECHANICAL/ELECTRICAL BASEMENT PLAN – NEW**  
 ME-2B SCALE: 1/4" = 1'-0"

**HAZARDOUS MATERIALS:**

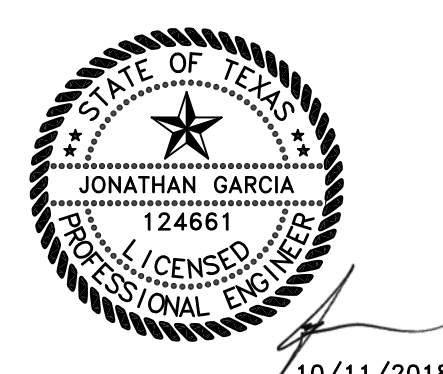
IF AT ANY TIME DURING DEMOLITION OR CONSTRUCTION THE CONTRACTOR ENCOUNTERS SUSPECTED HAZARDOUS MATERIALS IN ANY WAY. IMMEDIATELY NOTIFY OWNERS REPRESENTATIVE. AN ASBESTOS SURVEY IS AVAILABLE FOR THIS PROJECT THAT IDENTIFIES AREAS AND SYSTEMS WHERE ABATEMENT WILL BE REQUIRED. THE SURVEY IS INTENDED TO COVER POTENTIAL ITEMS IN THE CONSTRUCTION AREA. HOWEVER, THE CONTRACTOR SHALL USE CAUTION SINCE ADDITIONAL HAZARDOUS MATERIALS MAY BE UNCOVERED THAT ARE NOT IDENTIFIED IN THE SURVEY.

**MECHANICAL WORK KEYED NOTES**

1 MOUNT NEW ELECTRIC UNIT HEATER HIGH AGAINST STRUCTURE. WALL MOUNTED THERMOSTAT TO BE PLACED AT 48" AFF.

**ELECTRICAL KEYED NOTES:**

1 EXISTING ELECTRICAL EQUIPMENT TO REMAIN.  
 2 EXISTING ATS #2 TO REMAIN  
 3 FIRE PUMP CONTROLLER.  
 4 PROVIDE A 200A, 208V, 3 PHASE, 3W, 3 POLE, WALL MOUNTED ATS. COORDINATE SERVICE OUTAGES WITH SAHA MAINTENANCE DEPARTMENT.  
 5 DISCONNECT SWITCH: 30A/208V/3P/NEMA 1NF.  
 6 NOT USED.  
 7 PROVIDE A 20A/1P CIRCUIT BREAKER WITH 2#12, 1#12 GND IN 3/4" CONDUIT.  
 8 RECONNECT LIGHTING FIXTURES TO EXISTING JUNCTION BOX. FROM JUNCTION BOX, PROVIDE 2#12, 1#12 GND IN 3/4" CONDUIT.  
 9 10 HP JOCKEY PUMP PROVIDED BY OTHERS. REMOVE EXISTING 15A/3P CIRCUIT BREAKER IN SWITCHBOARD SECTION "E-8" AND PROVIDE A 60A/3P CIRCUIT BREAKER. PROVIDE WITH 3#4, 1#8 GND IN 1" CONDUIT. PROVIDE WITH A MOTOR STARTER AND DISCONNECT SWITCH. DISCONNECT SWITCH SHALL BE 60A/208V/3P/NEMA 1NF. SIZE OF MOTOR STARTER SHALL BE COORDINATED WITH JOCKEY PUMP MANUFACTURER AND FIRE PUMP ENGINEER. COORDINATE FINAL LOCATION OF JOCKEY PUMP WITH FIRE PROTECTION ENGINEER  
 10 REMOVE EXISTING 15A/3P CIRCUIT BREAKER THAT IS IN THE OFF POSITION, AND REPLACE WITH A 20A/3P CIRCUIT BREAKER IN SECTION INDICATED TO SERVE UH-B



10/11/2018

**REVISIONS:**

No.	DATE	DESCRIPTION
1	10/12/18	CSA REVIEW CHANGES

These documents and the ideas incorporated herein are instruments of professional service and are the property of Raba-Kistner Consultants, Inc. and are not to be used in whole or part without the written authorization of Raba-Kistner Consultants, Inc.

PROJECT No.: CZ17052  
 ISSUE DATE: 06/25/18  
 DRAWN BY: GC  
 CHECKED BY: J.G  
 REVIEWED BY: T.D

**SHEET NO.  
 ME-2B**

A:\2018\Proj\Draws - Fire Protection and Life Safety Renovations\2018\_ME-2B.dwg

**LIGHTING FIXTURE SCHEDULE**

MARK	MANUFACTURER/MODEL	DIMENSION	MOUNTING	FIXTURE VA	VOLTAGE	DESCRIPTION	NOTES
A	LITHONIA #ZL1F-L48-SMR-4500LM-MDO-MVGLT-40K-80CRI-CS93W-SQ	48"L X 10.7"W X 3.67"H	PENDANT AT 10FT	39	277 V	LED STRIPLIGHT	
X	LITHONIA #LQM-S-3-R-120/277-EL N-SD	11.75" X 7.625"		1	277 V	EXIT SIGN	

**NOTES:**

- ALL FIXTURES SHALL BE SPEC GRADE UNLESS OTHERWISE NOTED.
- ALL TOGGLE SWITCHES TO BE MOUNTED AT HEIGHTS TO COMPLY WITH ADA GUIDELINES UNLESS OTHERWISE NOTED.
- LIGHTING FIXTURES SHALL BE COORDINATED WITH THE CEILING TYPE PRIOR TO ORDERING. ALL FIXTURES SHALL BE SUPPLIED WITH APPROVED MOUNTING DEVICES, HANGERS, MOUNTING FRAMES, AND TRIM FOR PROPER INSTALLATION IN THE CEILING OR SOFFIT SYSTEM BEING PROVIDED ON THIS PROJECT REGARDLESS OF THE CATALOG NUMBER. REFER TO ARCHITECTURAL REFLECTIVE CEILING PLAN/ELEVATIONS FOR ADDITIONAL MOUNTING INFORMATION.
- ALL FIXTURES THAT HAVE A "E" SUFFIX ARE CONNECT TO GENERATOR POWER. (EXAMPLE "C1E").