

MTW SAFMR FY21 Payment Standards

Apply MTW, VASH and Mainstream programs.

Effective Date 3/1/21 and Recert IP 6/1/21

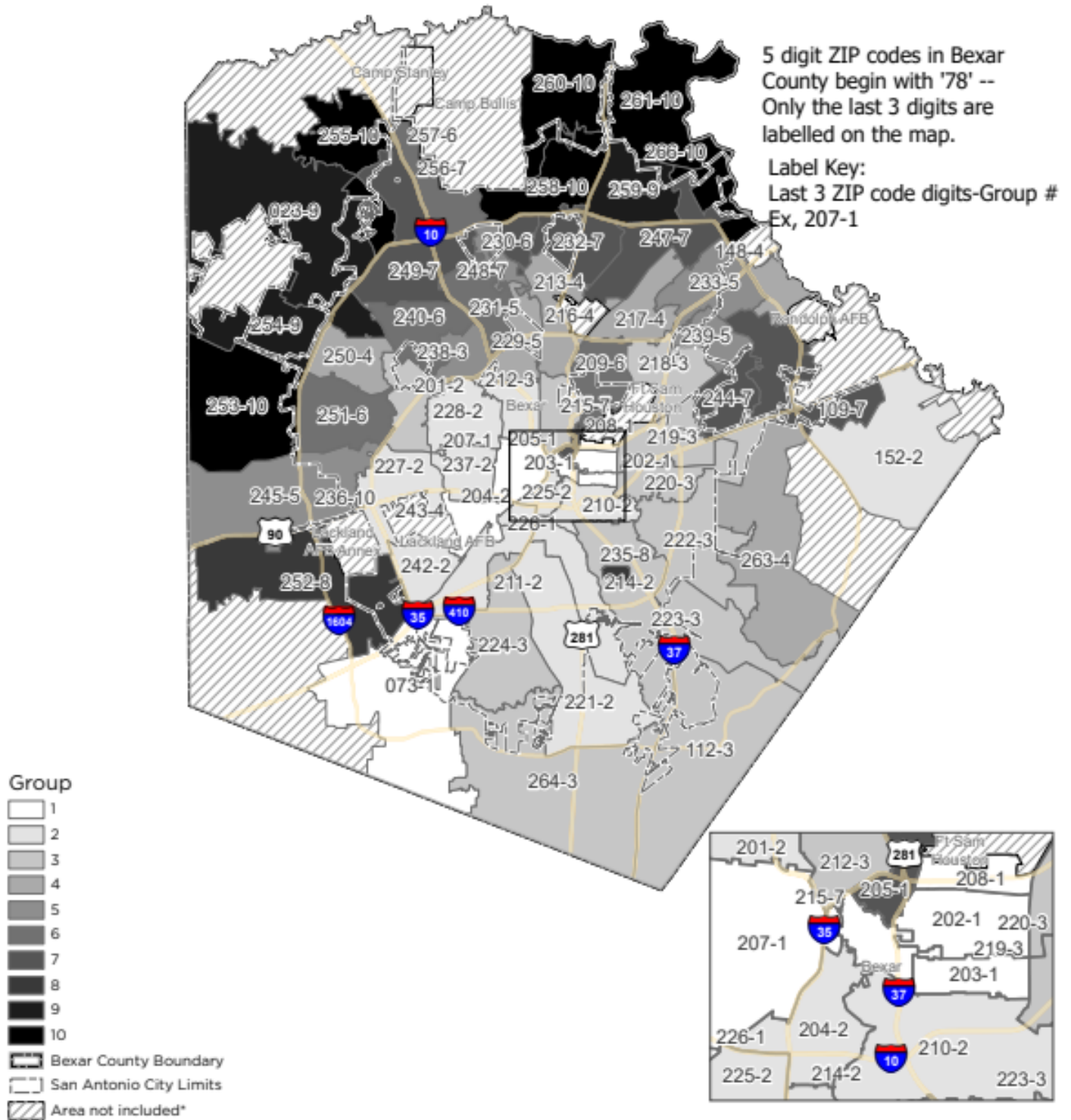
Group	Zip Code
1	78073, 78202*, 78203*, 78205*, 78207, 78208*, 78226
2	78152, 78201, 78204*, 78210, 78211, 78214, 78221, 78225, 78227, 78228, 78237, 78242
3	78112, 78212, 78218, 78219, 78220, 78222, 78223, 78224, 78238, 78264
4	78148, 78213, 78216, 78217, 78250, 78263
5	78229, 78231, 78233, 78239, 78245
6	78209, 78230, 78240, 78251, 78257
7	78109, 78215, 78232, 78244, 78247, 78248, 78249, 78256
8	78235, 78252
9	78023, 78254, 78259
10	78253, 78255, 78258, 78260, 78261, 78266

* ZIP Codes covered by the exception overlay

Zip Code Group	Bedroom						
	0	1	2	3	4	5	6
1	\$477	\$576	\$711	\$936	\$1,134	\$1,304	\$1,474
2	\$558	\$675	\$819	\$1,062	\$1,314	\$1,511	\$1,708
3	\$594	\$711	\$873	\$1,134	\$1,404	\$1,615	\$1,825
4	\$639	\$765	\$936	\$1,233	\$1,503	\$1,728	\$1,954
5	\$729	\$873	\$1,062	\$1,377	\$1,710	\$1,967	\$2,223
6	\$756	\$909	\$1,107	\$1,440	\$1,782	\$2,049	\$2,317
7	\$783	\$936	\$1,143	\$1,503	\$1,836	\$2,111	\$2,387
8	\$846	\$1,008	\$1,233	\$1,602	\$1,980	\$2,277	\$2,574
9	\$891	\$1,071	\$1,305	\$1,692	\$2,097	\$2,412	\$2,726
10	\$972	\$1,161	\$1,431	\$1,854	\$2,295	\$2,639	\$2,984

Local Small Area Fair Market Rent (SAFMR) - Fiscal Year 2021

Payment Standards are used to calculate the maximum subsidy that the PHA will pay each month toward rent and utilities for families with Housing Choice Vouchers. ZIP codes have been grouped into 10 Groups. Payment standards vary by Group and unit size. Please refer to the SAFMR Payment Standard Look-up Tables when using this map.



Camp Bullis, Fort Sam Houston, and Randolph Air Force Base ZIPs are not included. In addition, other notable areas such as the airport, Government Canyon, and other ZIP codes outside the San Antonio city limits are noted on the map as not included. NOTE: Some ZIP codes extend beyond the Bexar County. For a simpler map, these have been masked at the county line so only the portion of the ZIP code within the county is displayed.